

LOADING THE DATA LOGGER SOFTWARE

Step 1 – Turn off or pause any Anti-virus Software

Step 2 – Install the USB Drive into any USB Port on your Laptop. Open the drive to display the files on the drive. Select **USB-adapter.exe** and press ENTER.

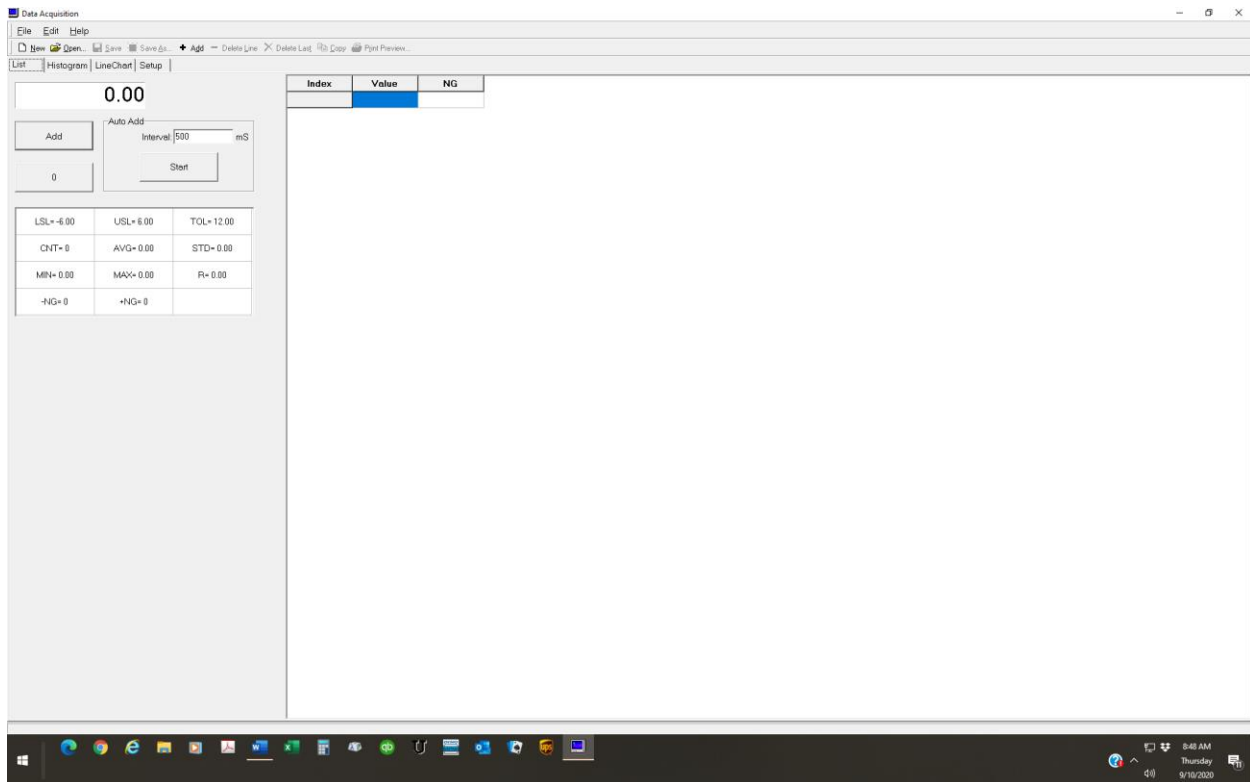
Step – 3 Once the setup screen appears, select the **Install USB Driver** Button.

Step – 4 Next, click the “**Install PC Software**” Button

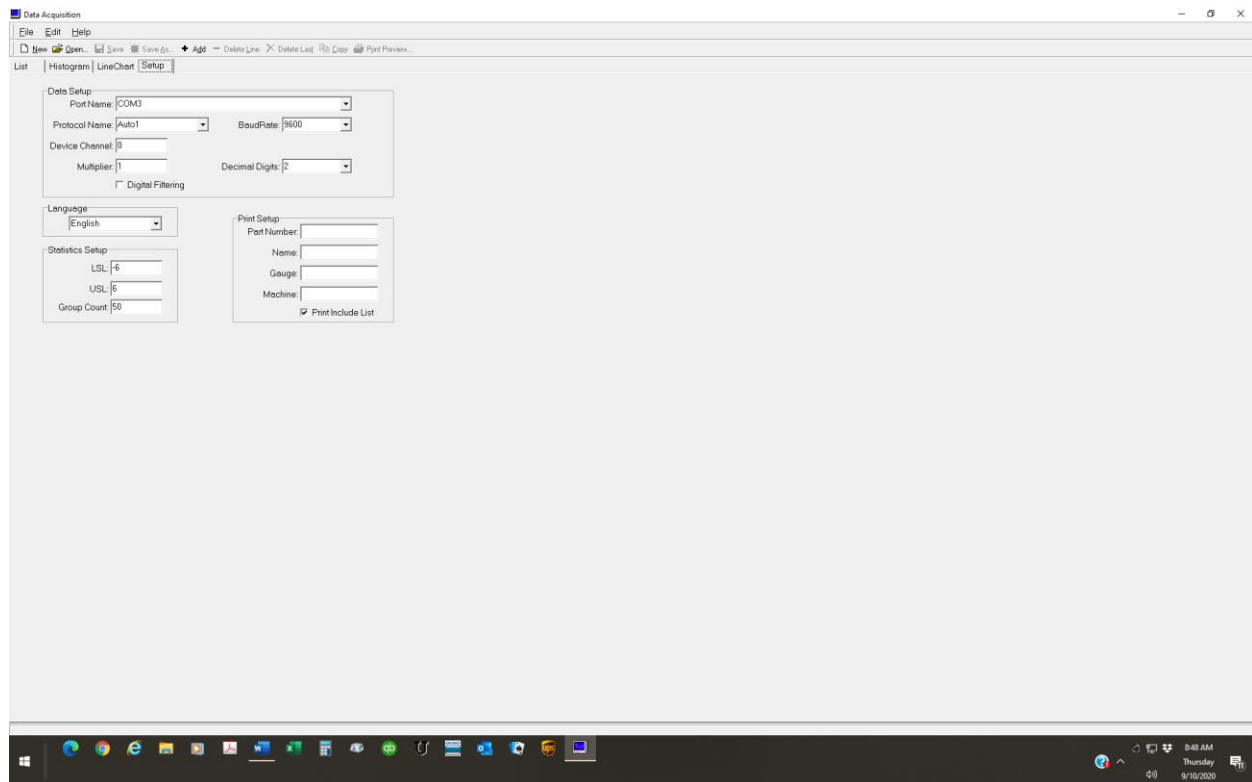
Step – 5 From the Desk Top Screen of your Laptop, right Click the **Data Monitor ICON**, then select **Run As Administrator**.

Step – 6 Once the software screen loads, click into the window titled “**Auto Add**”.

Step – 7 Click on the “**List**” Button in the upper tool bar and change the interval to 500 (mS), this will tell the software to take a measurement every one-half second.



Step – 8 Click on the “**Setup**” Button in the upper tool bar,



In the **Statistics Setup** Box:

Set LSL to -6

Set USL to +6

Set **Group Count** to 100. (This will limit the number of samples to 100 or 50 seconds of recording time).

Step – 9 In the **Print Setup** Box, fill in the following details:

Part Number: can be used for the date of the test

Name: can be used for the Inspector's Name

Gauge: EsKalometer S/N ?????

Machine: Escalator ID

Step – 10 Plug the USB/Dongle into the USB Port of your laptop.

Step – 11 Plug the FAT end of the adapter cable into the dongle and the SKINNY end into the Digital Read-out's Data Port on the side of the DRO.

Step – 12 The Red Light on the Dongle should illuminate indicating that power is present. Note: Com3 is most common; however, you may have to select another port.

If the system is “Talking” the Yellow Light on the dongle will flash. If not, try another Com Port number.

Step – 13 Click in the “**List**” Button in lower tool bar. Note the position value below, actuate the main foot of the EsKalometer and observe that the value is changing.

Step – 14 Depress the “**Zero**” button on the DRO.

Step – 15 Now you are ready to start taking measurements. Depress the **START** button to start taking measurements. Depress the **STOP** button to stop taking measurements.

Step – 16 Click on the **Save As** button to save your setup and data.

Step – 17 With the laptop connected to a printer, click the **Print Preview** Button, then print the report.